

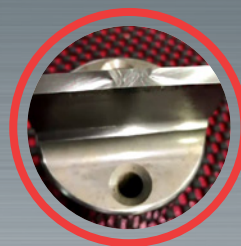
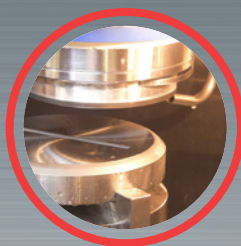
SOLUTION

GRINDING

TOGU EU



FAST, EASY AUTOMATIC TOOL GRINDING



AMADA

DATA SHEET

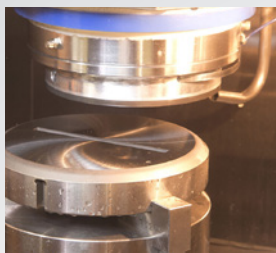
TOGU EU

FAST, EASY AUTOMATIC TOOL GRINDING

All punch press operators know how important tool maintenance is to part quality and tool life. Automatic tool can give a superior quality and process stability, considerably reducing maintenance times.

TOGU-EU automatic tool sharpener has been specially designed for high quality sharpening of sheet metal tools. With fast and reliable sharpening of all standard tools, it allows their optimal repair and guarantees to always produce high quality parts. Unlike traditional grinding machines, the TOGU-EU range can minimise the amount of material removed during grinding, preventing the tool from overheating and extending its life time.

MAIN ADVANTAGES



Superb grinding quality

The system to filter coolant and collect processing dust ensures constant grinding quality.



User friendly numerical control

Touchscreen numerical control ensures simple, user-friendly machine programming.



Safety locking down system

The machine incorporates a unique safety locking system. Visual operation /standby indication.

MACHINESPECIFICATIONS

| | | TOGU-EU |
|--------------------------------|-------------------|-------------------------------------|
| Minimum tool diameter | mm | 2 |
| Maximum tool diameter | mm | 160 |
| Maximum tool length | mm | 150 (three-jaw chuck) |
| Maximum grinding depth | mm/cycle | 0.99 |
| Rapid feed speed | mm/min | 600 |
| Grinding rate | mm/min | 0.03 to 0.06 (depending on station) |
| Vertical traverse | mm | 200 |
| Spindle motor speed | kW | 1.5 |
| | min ⁻¹ | 3000 |
| Machine dimensions (L x W x H) | mm | 750 x 821 x 1920 |
| Machine mass | kg | 470 |

Specifications, appearance, and equipment are subject to change without notice by reason of improvement.



For Your Safe Use

Be sure to read the operator's manual carefully before use.

When using this product, appropriate personal protection equipment must be used.

Hazard prevention measures are removed in the photos used in this sheet.

AMADA UK LTD.

Spennells Valley Road,
Kidderminster,
Worcestershire DY10 1XS
United Kingdom
Tel: +44 (0)1562 749500
Fax: +44 (0)1562 749510
www.amada.co.uk

AMADA SA

Paris Nord II
96, avenue de la Pyramide
93290 Tremblay en France
France
Tél : +33 (0)1 49 90 30 00
Fax : +33 (0)1 49 90 31 99
www.amada.fr

AMADA GmbH

Amada Allee 1
42781 Haan
Germany
Tel: +49 (0)2104 2126-0
Fax: +49 (0)2104 2126-999
www.amada.de

AMADA ITALIA S.r.l.

Via Amada I., 1/3
29010 Pontenure
(PC)
Italia
Tel: +39 (0)523-872111
Fax: +39 (0)523-872101
www.amada.it

